

How do you manually manage revisions of a BOM? Open up the part record for your BOM.

CETEC ERP

SALES PARTS PURCHASING WAREHOUSE ACCOUNTING PRODUCTION ADMIN

LISTS PRICING MAINTENANCE VENDOR RETURNS PART SPEC GROUPS REPORTS

Part BOM1000ABC

Cetec 101 BOM

VIEW

EDIT

REVISIONS

BOM DATA +

BOM OVERVIEW (0)

EDIT BOM

EXPORT BOM

BUILD ESTIMATE

BUILD W/ SUBS

PRICE/COST +

SALES +

PURCHASING +

ACTIVITY +

QUALITY +

MAINT +

DOCUMENTS (0)

NOTES (0)

PART DATA				
Description	Cetec 101 BOM			Revision1
Tech Description				
Default Cost	\$0.00000	Default Resale	\$0.00000	Pricing Rules
Last Buy Cost	\$0.00000	Created On	2022-04-21	Shelf Life0
Revenue G/L Account		COS G/L Account		Default Voucher Account
Preferred Vendor		Preferred Manufacturer		OEM Part #
UOM	(none)	Purchase UOM	(none)	Export (ECCN)
More Options				

 Click **Revisions**.

CETEC ERP

SALES

PARTS

PURCHASING

WAREHOUSE

ACCOUNTING

PRODUCTION

ADMIN

Q

≡

LISTS ▾

PRICING MAINTENANCE ▾

VENDOR RETURNS

PART SPEC GROUPS

REPORTS ▾

Part BOM1000ABC

Cetec 101 BOM

VIEW

EDIT

REVISIONS

BOM DATA +

BOM OVERVIEW (0)

EDIT BOM

EXPORT BOM

BUILD ESTIMATE

BUILD W/ SUBS

PRICE/COST +

SALES +

PURCHASING +

ACTIVITY +

QUALITY +

MAINT +

DOCUMENTS (0)

NOTES (0)

PART DATA

Description

Cetec 101 BOM

Revision

1

Tech Description

Default Cost

\$0.00000

Default Resale

\$0.00000

Pricing Rules

Last Buy Cost

\$0.00000

Created On

2022-04-21

Shelf Life

0

Revenue G/L Account

COS G/L Account

Default Voucher Account

Preferred Vendor

Preferred Manufacturer

OEM Part #

UOM

(none)

Purchase UOM

(none)

Export (ECCN)

More Options ▾

Apr 22, 2022

2 of 40

 Click **Edit BOM**.

CETEC ERP

SALES

PARTS

PURCHASING

WAREHOUSE

ACCOUNTING

PRODUCTION

ADMIN

ORDERS ▾

QUALITY ▾

PART REQUEST LIST

KITAUDIT ▾

MGMT ▾

TOOLS ▾

SCHEDULING ▾

Revisions For BOM1000ABC

VIEW

EDIT

REVISIONS

BOM DATA +

PRICE/COST +

SALES +

PURCHASING +

ACTIVITY +

QUALITY +

MAINT +

DOCUMENTS (0)

NOTES (0)

BOM Search For BOM1000ABC

Create New Revision

Create

Note: At least one revision must exist (a revision named " " will be auto-created if necessary), and be flagged as 'Current'

Revision	BOM	Labor Plan	Inspection Plan	Current Rev?	Lock/Unlock	Status	Delete
1	Edit BOM	Labor Plan	View (Copy)	Yes ▾	Locked ▾	Active ▾	Delete

CETEC ERP VERSION

4.040 ON APP2

COPYRIGHT © 2022

CETEC ERP

Help

Here you can enter the components that should appear on Revision 1 of this BOM.

CETEC ERP

SALES PARTS PURCHASING WAREHOUSE ACCOUNTING PRODUCTION ADMIN

LISTS PRICING MAINTENANCE VENDOR RETURNS PART SPEC GROUPS REPORTS

### Revision 1, Part BOM1000ABC (Cetec 101 BOM)

TO PART RECORD

WORK INST

LABOR PLAN

INSPECTION INST.

EDIT REVISION BOM

COMPARE BOM

IMPORT BOM

EXPORT BOM

RELATED PARTS

REVS LINKED

WORK REPORT

WORK INST. HISTORY

Back To Revisions

Note: Cost defaults to Inventory cost unless provided.

Note: Selecting (unset) for revision defaults to the current revision

Edit Revision BOM

+/- Columns

Comp #	Prcpart	Revision	Desc	Qty Per Top	Scrap Factor	Piece Measurement	Ext Cost	Info/Delete
(new)	prcpart			1	0			Update
Material Cost: \$0.00 Total Weight Of All Components:							Delete	

Show Batch Component Add

Re-Order Components

Repopulate From Another Part/Revision

Part: Revision: (Specify Part)

Apr 22, 2022

4 of 40

T Assign a component number.

CETEC ERP

SALES PARTS PURCHASING WAREHOUSE ACCOUNTING PRODUCTION ADMIN

LISTS PRICING MAINTENANCE VENDOR RETURNS PART SPEC GROUPS REPORTS

### Revision 1, Part BOM1000ABC (Cetec 101 BOM)

TO PART RECORD

WORK INST

LABOR PLAN

INSPECTION INST.

EDIT REVISION BOM

COMPARE BOM

IMPORT BOM

EXPORT BOM

RELATED PARTS

REVS LINKED

WORK REPORT

WORK INST. HISTORY

Back To Revisions

Note: Cost defaults to Inventory cost unless provided.

Note: Selecting (unset) for revision defaults to the current revision

Edit Revision BOM

+/- Columns

Comp #	Prcpart	Revision	Desc	Qty Per Top	Scrap Factor	Piece Measurement	Ext Cost	Info/Delete
1	prcpart			1	0			Update
Material Cost: \$0.00 Total Weight Of All Components:							Delete	

Show Batch Component Add


Re-Order Components

Repopulate From Another Part/Revision

Part: Revision: (Specify Part)

Apr 22, 2022

5 of 40

 Enter the Prcpart.

CETEC ERP

SALES

PARTS

PURCHASING

WAREHOUSE

ACCOUNTING

PRODUCTION

ADMIN

LISTS

PRICING MAINTENANCE

VENDOR RETURNS

PART SPEC GROUPS

REPORTS

Revision 1, Part BOM1000ABC (Cetec 101 BOM)

TO PART RECORD

WORK INST

LABOR PLAN

INSPECTION INST.

EDIT REVISION BOM

COMPARE BOM

IMPORT BOM

EXPORT BOM

RELATED PARTS

REVS LINKED

WORK REPORT

WORK INST. HISTORY

Back To Revisions

Note: Cost defaults to Inventory cost unless provided.

Note: Selecting (unset) for revision defaults to the current revision

Edit Revision BOM

+/- Columns

Comp #	Prcpart	Revision	Desc	Qty Per Top	Scrap Factor	Piece Measurement	Ext Cost	Info/Delete
1	prcpart			1	0			Update

Material Cost: \$0.00    Total Weight Of All Components:

Delete

Show Batch Component Add

Re-Order Components

Repopulate From Another Part/Revision

Part:    Revision: (Specify Part)

Help



## Revision 1, Part BOM1000ABC (Cetec 101 BOM)

- TO PART RECORD
- WORK INST
- LABOR PLAN
- INSPECTION INST.
- EDIT REVISION BOM
- COMPARE BOM
- IMPORT BOM
- EXPORT BOM
- RELATED PARTS
- REVS LINKED
- WORK REPORT
- WORK INST. HISTORY

[Back To Revisions](#)

Note: Cost defaults to Inventory cost unless provided.

Note: Selecting (unset) for revision defaults to the current revision

### Edit Revision BOM

+/- Columns

Comp #	Prcpart	Revision	Desc	Qty Per Top	Scrap Factor	Piece Measurement ⓘ	Ext Cost	Info/Delete
1	pvt1 PRT 1 (Desc: Connector)			1	0			Update
							Material Cost: \$0.00    Total Weight Of All Components:	Delete

Show Batch Com

Repopulate From

Part:

- PRT 10-1962 (Desc: Cont HD-20 Pin #24-20)
- PRT 100 (Desc: Part Descript)
- PRT 10000001 (Desc: 48 tooth Sprocket)
- PRT 10000002 (Desc: Wheel axle pipe rear)
- PRT 10000003 (Desc: Pipe Spacer Flange)
- PRT 10000009 (Desc: Center axle holder plate)
- PRT 10000010 (Desc: Center axle holder pipe)

(Specify Part) ▼

**Help**



Enter the quantity of this component per top assembly.

**CETEC ERP**

SALES**PARTS**PURCHASINGWAREHOUSEACCOUNTINGPRODUCTIONADMIN

LISTS ▾PRICING MAINTENANCE ▾VENDOR RETURNSPART SPEC GROUPSREPORTS ▾

## Revision 1, Part BOM1000ABC (Cetec 101 BOM)

[TO PART RECORD](#)  
[WORK INST](#)  
[LABOR PLAN](#)  
[INSPECTION INST.](#)  
[EDIT REVISION BOM](#)  
[COMPARE BOM](#)  
[IMPORT BOM](#)  
[EXPORT BOM](#)  
[RELATED PARTS](#)  
[REVS LINKED](#)  
[WORK REPORT](#)  
[WORK INST. HISTORY](#)

[Back To Revisions](#)

Note: Cost defaults to Inventory cost unless provided.  
Note: Selecting (unset) for revision defaults to the current revision

### Edit Revision BOM

+/- Columns

Comp #	Prcpart	Revision	Desc	Qty Per Top	Scrap Factor	Piece Measurement ⓘ	Ext Cost	Info/Delete
1	<u>PRT1</u>			1	0			Update

Material Cost: \$0.00   Total Weight Of All Components:

Delete

Show Batch Component AddRe-Order Components

**Repopulate From Another Part/Revision**

Part:Revision: (Specify Part) ▾



 To save your information, click **Update**.

CETEC ERP

SALES

PARTS

PURCHASING

WAREHOUSE

ACCOUNTING

PRODUCTION

ADMIN

LISTS

PRICING MAINTENANCE

VENDOR RETURNS

PART SPEC GROUPS

REPORTS

Revision 1, Part BOM1000ABC (Cetec 101 BOM)

TO PART RECORD

WORK INST

LABOR PLAN

INSPECTION INST.

EDIT REVISION BOM

COMPARE BOM

IMPORT BOM

EXPORT BOM

RELATED PARTS

REVS LINKED

WORK REPORT

WORK INST. HISTORY

Back To Revisions

Note: Cost defaults to Inventory cost unless provided.

Note: Selecting (unset) for revision defaults to the current revision

Edit Revision BOM

+/- Columns

Comp #	Prcpart	Revision	Desc	Qty Per Top	Scrap Factor	Piece Measurement	Ext Cost	Info/Delete
1	PRT1			5	0			Update

Material Cost: \$0.00

Total Weight Of All Components:

Delete

Show Batch Component Add

Re-Order Components

Repopulate From Another Part/Revision

Part: Revision: (Specify Part)

Help

Apr 22, 2022

9 of 40



Then add additional components in the same way.

**CETEC ERP**

SALES**PARTS**PURCHASINGWAREHOUSEACCOUNTINGPRODUCTIONADMIN

LISTS ▾PRICING MAINTENANCE ▾VENDOR RETURNSPART SPEC GROUPSREPORTS ▾

## Revision 1, Part BOM1000ABC (Cetec 101 BOM)

[TO PART RECORD](#)  
[WORK INST](#)  
[LABOR PLAN](#)  
[INSPECTION INST.](#)  
[EDIT REVISION BOM](#)  
[COMPARE BOM](#)  
[IMPORT BOM](#)  
[EXPORT BOM](#)  
[RELATED PARTS](#)  
[REVS LINKED](#)  
[WORK REPORT](#)  
[WORK INST. HISTORY](#)

[Back To Revisions](#)

Note: Cost defaults to Inventory cost unless provided.  
Note: Selecting (unset) for revision defaults to the current revision

### Edit Revision BOM

+/- Columns

Comp #	Prcpart	Revision	Desc	Qty Per Top	Scrap Factor	Piece Measurement ⓘ	Ext Cost	Info/Delete
1	PRT1	+ (unset) ▾	Connector	5 EA		0 2D/3D	\$5.00	ⓘ ✕
(new)	prcpart			1	0			Update
Material Cost: \$5.00 Total Weight Of All Components: 0 0							Delete	

Show Batch Component AddRe-Order Components



CETEC ERP

SALES PARTS PURCHASING WAREHOUSE ACCOUNTING PRODUCTION ADMIN

LISTS PRICING MAINTENANCE VENDOR RETURNS PART SPEC GROUPS REPORTS

Revision 1, Part BOM1000ABC (Cetec 101 BOM)

Success: Components Added: 1

TO PART RECORD

WORK INST

LABOR PLAN

INSPECTION INST.

EDIT REVISION BOM

COMPARE BOM

IMPORT BOM

EXPORT BOM

RELATED PARTS

REVS LINKED

WORK REPORT

WORK INST. HISTORY

Back To Revisions

Note: Cost defaults to Inventory cost unless provided.

Note: Selecting (unset) for revision defaults to the current revision

Edit Revision BOM

+/- Columns

Comp #	Prcpart	Revision	Desc	Qty Per Top	Scrap Factor	Piece Measurement	Ext Cost	Info/Delete
1	PRT1	(unset)	Connector	5 EA		0 2D/3D	\$5.00	
2	prcpart			1	0			Update
Material Cost: \$5.00 Total Weight Of All Components: 0 0							Delete	

Show Batch Component Add Re-Order Components



**Revision 1, Part BOM1000ABC (Cetec 101 BOM)**

✔ **Success:** Components Added: 1

×

- TO PART RECORD
- WORK INST
- LABOR PLAN
- INSPECTION INST.
- EDIT REVISION BOM
- COMPARE BOM
- IMPORT BOM
- EXPORT BOM
- RELATED PARTS
- REVS LINKED
- WORK REPORT
- WORK INST. HISTORY

[Back To Revisions](#)

Note: Cost defaults to Inventory cost unless provided.

Note: Selecting (unset) for revision defaults to the current revision

### Edit Revision BOM

+/- Columns

Comp #	Prcpart	Revision	Desc	Qty Per Top	Scrap Factor	Piece Measurement ⓘ	Ext Cost	Info/Delete
1	PRT1 + (unset) ▼	Connector	5 EA		0	2D/3D	\$5.00	ⓘ ✕
2	<div>prt2</div> <div>PRT 2 (Desc: Component A)</div>			1	0			Update
	PRT 20-0011 (Desc: Conn 25-POS D Plug SN)							
	PRT 20-0021 (Desc: Hood 25-POS Black)							
	PRT 20-0388 (Desc: Male Screw Retainer Kit)							
	PRT 220025 (Desc: 230/400 V 3 Phase 50 Hz High Wye)							
Material Cost: \$5.00   Total Weight Of All Components: 0   0							Delete	

Show Batch C



## Revision 1, Part BOM1000ABC (Cetec 101 BOM)

✓ Success: Components Added: 1



TO PART RECORD  
WORK INST  
LABOR PLAN  
INSPECTION INST.  
EDIT REVISION BOM  
COMPARE BOM  
IMPORT BOM  
EXPORT BOM  
RELATED PARTS  
REVS LINKED  
WORK REPORT  
WORK INST. HISTORY

[Back To Revisions](#)

Note: Cost defaults to Inventory cost unless provided.

Note: Selecting (unset) for revision defaults to the current revision

## Edit Revision BOM

+/- Columns

Comp #	Prcpart	Revision	Desc	Qty Per Top	Scrap Factor	Piece Measurement ⓘ	Ext Cost	Info/Delete
1	PRT1	(unset) ▾	Connector	5 EA		0 2D/3D	\$5.00	ⓘ ✕
2	PRT2			1	0			Update
Material Cost: \$5.00 Total Weight Of All Components: 0 0								Delete

Show Batch Component Add

Re-Order Components

Help



CETEC ERP

SALES PARTS PURCHASING WAREHOUSE ACCOUNTING PRODUCTION ADMIN

LISTS PRICING MAINTENANCE VENDOR RETURNS PART SPEC GROUPS REPORTS

Revision 1, Part BOM1000ABC (Cetec 101 BOM)

Success: Components Added: 1

TO PART RECORD

WORK INST

LABOR PLAN

INSPECTION INST.

EDIT REVISION BOM

COMPARE BOM

IMPORT BOM

EXPORT BOM

RELATED PARTS

REVS LINKED

WORK REPORT

WORK INST. HISTORY

Back To Revisions

Note: Cost defaults to Inventory cost unless provided.

Note: Selecting (unset) for revision defaults to the current revision

Edit Revision BOM

+/- Columns

Comp #	Prcpart	Revision	Desc	Qty Per Top	Scrap Factor	Piece Measurement	Ext Cost	Info/Delete
1	PRT1	(unset)	Connector	5 EA		0 2D/3D	\$5.00	
2	PRT2			2	0			Update
Material Cost: \$5.00 Total Weight Of All Components: 0 0							Delete	

Show Batch Component Add Re-Order Components

 You can add a subassembly in the same way. Simply add a component part that has been designated as a BOM.

CETEC ERP

SALES PARTS PURCHASING WAREHOUSE ACCOUNTING PRODUCTION ADMIN

LISTS ▾ PRICING MAINTENANCE ▾ VENDOR RETURNS PART SPEC GROUPS REPORTS ▾

Revision 1, Part BOM1000ABC (Cetec 101 BOM)

Success: Components Added: 1

TO PART RECORD  
WORK INST  
LABOR PLAN  
INSPECTION INST.  
EDIT REVISION BOM  
COMPARE BOM  
IMPORT BOM  
EXPORT BOM  
RELATED PARTS  
REVS LINKED  
WORK REPORT  
WORK INST. HISTORY

Back To Revisions

Note: Cost defaults to Inventory cost unless provided.  
Note: Selecting (unset) for revision defaults to the current revision

Edit Revision BOM

+/- Columns

Comp #	Prcpart	Revision	Desc	Qty Per Top	Scrap Factor	Piece Measurement ⓘ	Ext Cost	Info/Delete
1	PRT1	+ (unset) ▾	Connector	5 EA		0 2D/3D	\$5.00	ⓘ ✖
2	PRT2	+ (unset) ▾	Component A	2 EA		0 2D/3D	\$4.00	ⓘ ✖
(new)	prcpart			1	0			Update
Material Cost: \$9.00 Total Weight Of All Components: 0 0							Delete	

Apr 22, 2022

15 of 40



CETEC ERP

SALES PARTS PURCHASING WAREHOUSE ACCOUNTING PRODUCTION ADMIN

LISTS PRICING MAINTENANCE VENDOR RETURNS PART SPEC GROUPS REPORTS

Revision 1, Part BOM1000ABC (Cetec 101 BOM)

Success: Components Added: 1

TO PART RECORD

WORK INST

LABOR PLAN

INSPECTION INST.

EDIT REVISION BOM

COMPARE BOM

IMPORT BOM

EXPORT BOM

RELATED PARTS

REVS LINKED

WORK REPORT

WORK INST. HISTORY

Back To Revisions

Note: Cost defaults to Inventory cost unless provided.

Note: Selecting (unset) for revision defaults to the current revision

Edit Revision BOM

+/- Columns

Comp #	Prcpart	Revision	Desc	Qty Per Top	Scrap Factor	Piece Measurement	Ext Cost	Info/Delete
1	PRT1	+ (unset)	Connector	5 EA		0 2D/3D	\$5.00	i x
2	PRT2	+ (unset)	Component A	2 EA		0 2D/3D	\$4.00	i x
3	prcpart			1	0			Update
Material Cost: \$9.00 Total Weight Of All Components: 0 0							Delete	





(Here, our PRC code is "BOM" but yours doesn't have to be. The component just needs to be designated as a BOM on its part record.)

## Revision 1, Part BOM1000ABC (Cetec 101 BOM)

TO PART RECORD  
WORK INST  
LABOR PLAN  
INSPECTION INST.  
EDIT REVISION BOM  
COMPARE BOM  
IMPORT BOM  
EXPORT BOM  
RELATED PARTS  
REVS LINKED  
WORK REPORT  
WORK INST. HISTORY

[Back To Revisions](#)

Note: Cost defaults to Inventory cost unless provided.

Note: Selecting (unset) for revision defaults to the current revision

### Edit Revision BOM

+/- Columns

Comp #	Prcpart	Revision	Desc	Qty Per Top	Scrap Factor	Piece Measurement	Ext Cost	Info/Delete
1	PRT1	+ (unset) ▼	Connector	5 EA		0	\$5.00	
2	PRT2	+ (unset) ▼	Component A	2 EA		0	\$4.00	
3	BOM			1	0			
	BOM 1000 - ABC							
	BOM 20X8 FT FOOD TRAILER - STANDARD BUILD (Desc: Standard 20x8 Trailer Build)						Cost: \$9.00 Total Weight Of All Components: 0 0	
	BOM 64T22G01 (Desc: Finished Product - Jet Engine Assembly)							
	BOM BOM 12X8 FT FOOD TRAILER - STANDARD BUILD							
	BOM MOXIE - DEVICE - PROJECT - GENERIC (Desc: Moxie Project)							
	BOM -FAB-AEROSPACE-UNIT (Desc: Specialized highly engineered aerospace componentry - Athena built)							
	BOM -NEW-PART-NUMBER							
	BOM 019274018							
	BOM 093409238423							
	BOM 1000 (Desc: Sample BOM)							



## Revision 1, Part BOM1000ABC (Cetec 101 BOM)

TO PART RECORD  
WORK INST  
LABOR PLAN  
INSPECTION INST.  
EDIT REVISION BOM  
COMPARE BOM  
IMPORT BOM  
EXPORT BOM  
RELATED PARTS  
REVS LINKED  
WORK REPORT  
WORK INST. HISTORY

[Back To Revisions](#)

Note: Cost defaults to Inventory cost unless provided.

Note: Selecting (unset) for revision defaults to the current revision

### Edit Revision BOM

[+/- Columns](#)

Comp #	Prcpart	Revision	Desc	Qty Per Top	Scrap Factor	Piece Measurement ⓘ	Ext Cost	Info/Delete
1	PRT1	+ (unset) ▼	Connector	5 EA		0 2D/3D	\$5.00	ⓘ ✕
2	PRT2	+ (unset) ▼	Component A	2 EA		0 2D/3D	\$4.00	ⓘ ✕
3	BOM019274018			1	0			Update
Material Cost: \$9.00 Total Weight Of All Components: 0 0								Delete

[Show Batch Component Add](#)[Re-Order Components](#)

### Repopulate From Another Part/Revision

Part:  Revision: (Specify Part) ▼

[Overwrite/Repopulate](#)

Help

 To see the results of your work, click **To Part Record**.

CETEC ERP

SALES

PARTS

PURCHASING

WAREHOUSE

ACCOUNTING

PRODUCTION

ADMIN

LISTS

PRICING MAINTENANCE

VENDOR RETURNS

PART SPEC GROUPS

REPORTS

Revision 1, Part BOM1000ABC (Cetec 101 BOM)

TO PART RECORD

WORK INST

LABOR PLAN

INSPECTION INST.

EDIT REVISION BOM

COMPARE BOM

IMPORT BOM

EXPORT BOM

RELATED PARTS

REVS LINKED

WORK REPORT

WORK INST. HISTORY

Back To Revisions

Note: Cost defaults to Inventory cost unless provided.

Note: Selecting (unset) for revision defaults to the current revision

Edit Revision BOM

+/- Columns

Comp #	Prcpart	Revision	Desc	Qty Per Top	Scrap Factor	Piece Measurement	Ext Cost	Info/Delete
1	PRT1	+ (unset)	Connector	5 EA		0 2D/3D	\$5.00	
2	PRT2	+ (unset)	Component A	2 EA		0 2D/3D	\$4.00	
3	BOM019274018	+ (unset)		1		0 2D/3D	\$0.00	
(new)	prcpart			1	0			<div>Update</div>

Help

 Click **BOM Data +**.

CETEC ERP

SALES

PARTS

PURCHASING

WAREHOUSE

ACCOUNTING

PRODUCTION

ADMIN

LISTS ▾

PRICING MAINTENANCE ▾

VENDOR RETURNS

PART SPEC GROUPS

REPORTS ▾

Part BOM1000ABC

Cetec 101 BOM

VIEW

EDIT

REVISIONS

BOM DATA +

PRICE/COST +

SALES +

PURCHASING +

ACTIVITY +

QUALITY +

MAINT +

DOCUMENTS (0)

NOTES (0)

PART DATA				
Description	Cetec 101 BOM			Revision1
Tech Description				
Default Cost	\$0.00000	Default Resale	\$0.00000	Pricing Rules
Last Buy Cost	\$0.00000	Created On	2022-04-21	Shelf Life0
Revenue G/L Account		COS G/L Account		Default Voucher Account
Preferred Vendor		Preferred Manufacturer		OEM Part #
UOM	(none)	Purchase UOM	(none)	Export (ECCN)
More Options ▾				

Help

Apr 22, 2022

20 of 40

 Click **BOM Overview**.

CETEC ERP

SALES

PARTS

PURCHASING

WAREHOUSE

ACCOUNTING

PRODUCTION

ADMIN

LISTS ▾

PRICING MAINTENANCE ▾

VENDOR RETURNS

PART SPEC GROUPS

REPORTS ▾

Part BOM1000ABC

Cetec 101 BOM

VIEW

EDIT

REVISIONS

BOM DATA +

BOM OVERVIEW (3)

EDIT BOM

EXPORT BOM

BUILD ESTIMATE

BUILD W/ SUBS

PRICE/COST +

SALES +

PURCHASING +

ACTIVITY +

QUALITY +

MAINT +

DOCUMENTS (0)

NOTES (0)

PART DATA				
Description	Cetec 101 BOM			Revision1
Tech Description				
Default Cost	\$0.00000	Default Resale	\$0.00000	Pricing Rules
Last Buy Cost	\$0.00000	Created On	2022-04-21	Shelf Life0
Revenue G/L Account		COS G/L Account		Default Voucher Account
Preferred Vendor		Preferred Manufacturer		OEM Part #
UOM	(none)	Purchase UOM	(none)	Export (ECCN)
More Options ▾				

Help

Apr 22, 2022

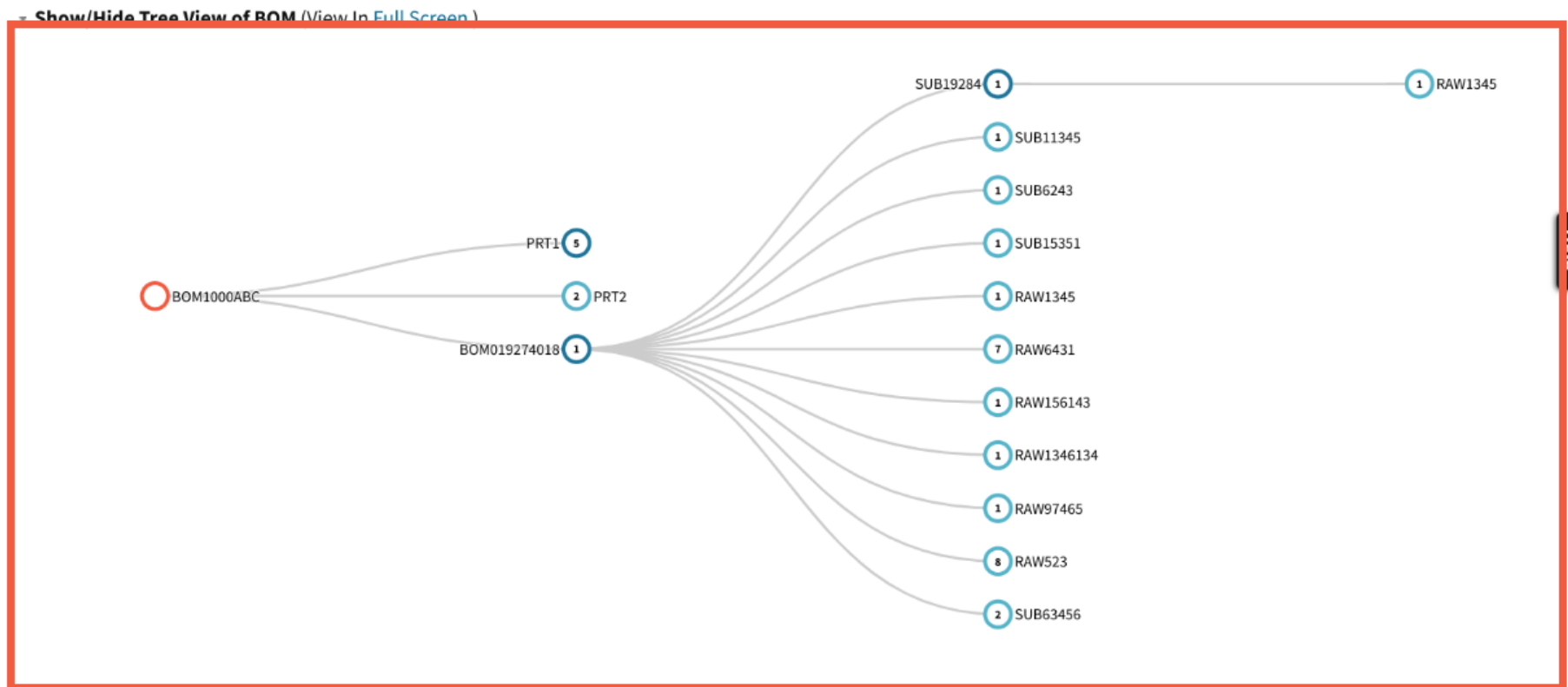
21 of 40



Here you can view or hide a tree view of your BOM. In this example we can clearly see that the third component we added to our BOM's current revision was a subassembly.

### Cetec 101 BOM

VIEW  
EDIT  
REVISIONS  
BOM DATA +  
PRICE/COST +  
SALES +  
PURCHASING +  
ACTIVITY +  
QUALITY +  
MAINT +  
DOCUMENTS (0)  
NOTES (0)



BOM Overview For Current Revision, 1



On this screen, we can also view the BOM overview for our current revision.

2 SUB63456

**BOM Overview For Current Revision, 1**

Build Qty  Set

[Printable, With Sub Components](#) | [Printable, Top Level Only](#) [Export](#)

[+/- Columns](#)

#	Prcpart	Description	QOH	Qty/Top	Ext. Qty/Top	Ext Cost	Rollup	Info
1	PRT1	Connector	265 EA	5 EA	5 EA	\$5.00000	(\$5.00000)	
2	PRT2	Component A	456 EA	2 EA	2 EA	\$4.00000	(\$4.00000)	
3	BOM019274018		0	1	1	\$0.00000	(\$0.00000)	
Setup \$0.00000		Setup O/H \$0.00000	Labor \$0.00000 (0 Mins)		Overhead \$0.00000	Material \$193.00000		
Rollup for Qty 1 of BOM1000ABC						Unit \$193.00000		

[+/- All BOMs](#)

Complete Units Available to Build at MN: 0

Use Cached Pricing To Speed Page? ☐



To add another revision, click **Revisions**.

**CETEC ERP**

SALES **PARTS** PURCHASING WAREHOUSE ACCOUNTING PRODUCTION ADMIN

LISTS ▾ PRICING MAINTENANCE ▾ VENDOR RETURNS PART SPEC GROUPS REPORTS ▾

## Part BOM1000ABC

### Cetec 101 BOM

VIEW  
EDIT  
**REVISIONS**  
BOM DATA +  
PRICE/COST +  
SALES +  
PURCHASING +  
ACTIVITY +  
QUALITY +  
MAINT +  
DOCUMENTS (0)  
NOTES (0)

▼ Show/Hide Tree View of BOM (View In [Full Screen](#))

```
graph LR; BOM1000ABC((BOM1000ABC)) --- PRT1((PRT1 5)); BOM1000ABC --- PRT2((PRT2 2)); BOM1000ABC --- BOM019274018((BOM019274018 1)); BOM019274018 --- SUB19284((SUB19284 1)); BOM019274018 --- SUB11345((SUB11345 1)); BOM019274018 --- SUB6243((SUB6243 1)); BOM019274018 --- SUB15351((SUB15351 1)); BOM019274018 --- RAW1345_1((RAW1345 1)); BOM019274018 --- RAW6431((RAW6431 7)); BOM019274018 --- RAW156143((RAW156143 1)); BOM019274018 --- RAW1346134((RAW1346134 1)); SUB19284 --- RAW1345_2((RAW1345 1));
```

Help



 Enter a name for the new revision.

CETEC ERP

SALES PARTS PURCHASING WAREHOUSE ACCOUNTING PRODUCTION ADMIN

ORDERS ▼ QUALITY ▼ PART REQUEST LIST KITAUDIT ▼ MGMT ▼ TOOLS ▼ SCHEDULING ▼

Revisions For BOM1000ABC

VIEW

EDIT

REVISIONS

BOM DATA +

PRICE/COST +

SALES +

PURCHASING +

ACTIVITY +

QUALITY +

MAINT +

DOCUMENTS (0)

NOTES (0)

BOM Search For BOM1000ABC

Create New Revision

Create

Note: At least one revision must exist (a revision named " " will be auto-created if necessary), and be flagged as 'Current'

Revision	BOM	Labor Plan	Inspection Plan	Current Rev?	Lock/Unlock	Status	Delete
1	Edit BOM	Labor Plan	View (Copy)	Yes ▼	Locked ▼	Active ▼	Delete

CETEC ERP VERSION 4.040 ON APP2 COPYRIGHT © 2022 CETEC ERP

 Click **Create**.

CETEC ERP

SALES PARTS PURCHASING WAREHOUSE ACCOUNTING **PRODUCTION** ADMIN

ORDERS ▼ QUALITY ▼ PART REQUEST LIST KITAUDIT ▼ MGMT ▼ TOOLS ▼ SCHEDULING ▼

VIEW  
EDIT  
**REVISIONS**  
BOM DATA +  
PRICE/COST +  
SALES +  
PURCHASING +  
ACTIVITY +  
QUALITY +  
MAINT +  
DOCUMENTS (0)  
NOTES (0)

BOM Search For BOM1000ABC

Create New Revision 2

Create

Note: At least one revision must exist (a revision named " " will be auto-created if necessary), and be flagged as 'Current'

Revision	BOM	Labor Plan	Inspection Plan	Current Rev?	Lock/Unlock	Status	Delete
1	Edit BOM	Labor Plan	View (Copy)	Yes ▼	Locked ▼	Active ▼	Delete

CETEC ERP VERSION 4.040 ON APP2 COPYRIGHT © 2022 CETEC ERP

Help



Click **Edit BOM** to manually enter components as we did for our first revision.

**CETEC ERP**

SALES PARTS PURCHASING WAREHOUSE ACCOUNTING **PRODUCTION** ADMIN

ORDERS ▼ QUALITY ▼ PART REQUEST LIST KITAUDIT ▼ MGMT ▼ TOOLS ▼ SCHEDULING ▼

**Revisions For BOM1000ABC**

VIEW  
EDIT  
REVISIONS  
BOM DATA +  
PRICE/COST +  
SALES +  
PURCHASING +  
ACTIVITY +  
QUALITY +  
MAINT +  
DOCUMENTS (0)  
NOTES (0)

BOM Search For BOM1000ABC

Create New Revision  **Create**

Note: At least one revision must exist (a revision named " will be auto-created if necessary), and be flagged as 'Current'

Revision	BOM	Labor Plan	Inspection Plan	Current Rev?	Lock/Unlock	Status	Delete
1	<a href="#">Edit BOM</a>	<a href="#">Labor Plan</a>	<a href="#">View (Copy)</a>	Yes ▼	Locked ▼	Active ▼	<a href="#">Delete</a>
2	<a href="#">Edit BOM</a>	<a href="#">Labor Plan</a>	<a href="#">View (Copy)</a>	No ▼	Locked ▼	Active ▼	<a href="#">Delete</a>

Information: Revision Created

×

Help

CETEC ERP VERSION 4.040 ON APP2 COPYRIGHT © 2022 CETEC ERP

One revision will be set as the current revision. You can set that here.

CETEC ERP

SALES PARTS PURCHASING WAREHOUSE ACCOUNTING PRODUCTION ADMIN

ORDERS QUALITY PART REQUEST LIST KITAUDIT MGMT TOOLS SCHEDULING

Revisions For BOM1000ABC

VIEW  
EDIT  
REVISIONS  
BOM DATA +  
PRICE/COST +  
SALES +  
PURCHASING +  
ACTIVITY +  
QUALITY +  
MAINT +  
DOCUMENTS (0)  
NOTES (0)

BOM Search For BOM1000ABC

Create New Revision

Create

Note: At least one revision must exist (a revision named " " will be auto-created if necessary), and be flagged as 'Current'

Revision	BOM	Labor Plan	Inspection Plan	Current Rev?	Lock/Unlock	Status	Delete
1	Edit BOM	Labor Plan	View (Copy)	Yes	Locked	Active	Delete
2	Edit BOM	Labor Plan	View (Copy)	No	Locked	Active	Delete

CETEC ERP VERSION 4.040 ON APP2 COPYRIGHT

No  
Yes

Help



CETEC ERP

SALES PARTS PURCHASING WAREHOUSE ACCOUNTING **PRODUCTION** ADMIN

ORDERS ▼ QUALITY ▼ PART REQUEST LIST KITAUDIT ▼ MGMT ▼ TOOLS ▼ SCHEDULING ▼

Revisions For BOM1000ABC

VIEW  
EDIT  
REVISIONS  
BOM DATA +  
PRICE/COST +  
SALES +  
PURCHASING +  
ACTIVITY +  
QUALITY +  
MAINT +  
DOCUMENTS (0)  
NOTES (0)

BOM Search For BOM1000ABC

Create New Revision

Create

Note: At least one revision must exist (a revision named " will be auto-created if necessary), and be flagged as 'Current'

Revision	BOM	Labor Plan	Inspection Plan	Current Rev?	Lock/Unlock	Status	Delete
1	Edit BOM	Labor Plan	View (Copy)	Yes	Locked	Active	Delete
2	Edit BOM	Labor Plan	View (Copy)	Yes	Locked	Active	Delete

Process No.  
✓ Yes

Information: Revision Created

Help

CETEC ERP VERSION 4.040 ON APP2 COPYRIGHT © 2022 CETEC ERP



Notice that when you select Yes on a revision, the other revision is automatically set to No.

**CETEC ERP**

SALES PARTS PURCHASING WAREHOUSE ACCOUNTING **PRODUCTION** ADMIN

ORDERS ▼ QUALITY ▼ PART REQUEST LIST KITAUDIT ▼ MGMT ▼ TOOLS ▼ SCHEDULING ▼

**Revisions For BOM1000ABC**

**Information:** Revision Created

VIEW

EDIT

REVISIONS

BOM DATA +

PRICE/COST +

SALES +

PURCHASING +

ACTIVITY +

QUALITY +

MAINT +

DOCUMENTS (0)

NOTES (0)

BOM Search For BOM1000ABC

Create New Revision  **Create**

Note: At least one revision must exist (a revision named " will be auto-created if necessary), and be flagged as 'Current'

Revision	BOM	Labor Plan	Inspection Plan	Current Rev?	Lock/Unlock	Status	Delete
1	<a href="#">Edit BOM</a>	<a href="#">Labor Plan</a>	<a href="#">View (Copy)</a>	<div>No</div>	<div>Locked</div>	<div>Active</div>	<a href="#">Delete</a>
2	<a href="#">Edit BOM</a>	<a href="#">Labor Plan</a>	<a href="#">View (Copy)</a>	<div>Yes</div> <div>Updated</div>	<div>Locked</div>	<div>Active</div>	<a href="#">Delete</a>

CETEC ERP VERSION 4.040 ON APP2 COPYRIGHT © 2022 CETEC ERP

 Let's set our first revision to current.

CETEC ERP

SALES PARTS PURCHASING WAREHOUSE ACCOUNTING PRODUCTION ADMIN

ORDERS ▼ QUALITY ▼ PART REQUEST LIST KITAUDIT ▼ MGMT ▼ TOOLS ▼ SCHEDULING ▼

Revisions For BOM1000ABC

VIEW  
EDIT  
REVISIONS  
BOM DATA +  
PRICE/COST +  
SALES +  
PURCHASING +  
ACTIVITY +  
QUALITY +  
MAINT +  
DOCUMENTS (0)  
NOTES (0)

BOM Search For BOM1000ABC

Create New Revision 

Create

Note: At least one revision must exist (a revision named " " will be auto-created if necessary), and be flagged as 'Current'

Revision	BOM	Labor Plan	Inspection Plan	Current Rev?	Lock/Unlock	Status	Delete
1	<a href="#">Edit BOM</a>	<a href="#">Labor Plan</a>	<a href="#">View (Copy)</a>	<div>No ▼</div>	<div>Locked ▼</div>	<div>Active ▼</div>	<a href="#">Delete</a>
2	<a href="#">Edit BOM</a>	<a href="#">Labor Plan</a>	<a href="#">View (Copy)</a>	<div>Yes ▼</div> <div>Updated</div>	<div>Locked ▼</div>	<div>Active ▼</div>	<a href="#">Delete</a>

No

Yes

CETEC ERP VERSION 4.040 ON APP2 COPYRIGHT © 2022 CETEC ERP



CETEC ERP

SALES

PARTS

PURCHASING

WAREHOUSE

ACCOUNTING

PRODUCTION

ADMIN

Q

≡

ORDERS ▾

QUALITY ▾

PART REQUEST LIST

KITAUDIT ▾

MGMT ▾

TOOLS ▾

SCHEDULING ▾

Revisions For BOM1000ABC

Information: Revision Created

✕

VIEW

EDIT

REVISIONS

BOM DATA +

PRICE/COST +

SALES +

PURCHASING +

ACTIVITY +

QUALITY +

MAINT +

DOCUMENTS (0)

NOTES (0)

BOM Search For BOM1000ABC

Create New Revision

Create

Note: At least one revision must exist (a revision named " will be auto-created if necessary), and be flagged as 'Current'

Revision	BOM	Labor Plan	Inspection Plan	Current Rev?	Lock/Unlock	Status	Delete
1	Edit BOM	Labor Plan	View (Copy)	<div>Yes</div>	<div>Locked</div>	<div>Active</div>	Delete
2	Edit BOM	Labor Plan	View (Copy)	<div>✓ Yes</div>	<div>Locked</div>	<div>Active</div>	Delete

CETEC ERP VERSION

4.040 ON APP2

COPYRIGHT © 2022

CETEC ERP



If you need to delete a revision, here is where you do that.

CETEC ERP

SALES PARTS PURCHASING WAREHOUSE ACCOUNTING PRODUCTION ADMIN

ORDERS QUALITY PART REQUEST LIST KITAUDIT MGMT TOOLS SCHEDULING

VIEW  
EDIT  
REVISIONS  
BOM DATA +  
PRICE/COST +  
SALES +  
PURCHASING +  
ACTIVITY +  
QUALITY +  
MAINT +  
DOCUMENTS (0)  
NOTES (0)

Revisions For BOM1000ABC

Information: Revision Created

BOM Search For BOM1000ABC

Create New Revision

Create

Note: At least one revision must exist (a revision named " " will be auto-created if necessary), and be flagged as 'Current'

Revision	BOM	Labor Plan	Inspection Plan	Current Rev?	Lock/Unlock	Status	Delete
1	Edit BOM	Labor Plan	View (Copy)	Yes Updated	Locked	Active	Delete
2	Edit BOM	Labor Plan	View (Copy)	No Updated	Locked	Active	Delete

CETEC ERP VERSION 4.040 ON APP2 COPYRIGHT © 2022 CETEC ERP

Apr 22, 2022

33 of 40

 You can also set revisions as **Locked**

CETEC ERP

SALES PARTS PURCHASING WAREHOUSE ACCOUNTING **PRODUCTION** ADMIN

ORDERS ▼ QUALITY ▼ PART REQUEST LIST KITAUDIT ▼ MGMT ▼ TOOLS ▼ SCHEDULING ▼

Revisions For BOM1000ABC

VIEW

EDIT

REVISIONS

BOM DATA +

PRICE/COST +

SALES +

PURCHASING +

ACTIVITY +

QUALITY +

MAINT +

DOCUMENTS (0)

NOTES (0)

BOM Search For BOM1000ABC

Create New Revision

Create

Note: At least one revision must exist (a revision named " " will be auto-created if necessary), and be flagged as 'Current'

Revision	BOM	Labor Plan	Inspection Plan	Current Rev?	Lock/Unlock	Status	Delete
1	<a href="#">Edit BOM</a>	<a href="#">Labor Plan</a>	<a href="#">View (Copy)</a>	Yes ▼	<div>Locked ▼</div>	Active ▼	<a href="#">Delete</a>

Locked

Unlocked

Information: Revision Deleted

X

CETEC ERP VERSION 4.040 ON APP2 COPYRIGHT © 2022 CETEC ERP

 or Unlocked,

CETEC ERP

SALES PARTS PURCHASING WAREHOUSE ACCOUNTING **PRODUCTION** ADMIN

ORDERS ▼ QUALITY ▼ PART REQUEST LIST KITAUDIT ▼ MGMT ▼ TOOLS ▼ SCHEDULING ▼

Revisions For BOM1000ABC

VIEW  
EDIT  
REVISIONS  
BOM DATA +  
PRICE/COST +  
SALES +  
PURCHASING +  
ACTIVITY +  
QUALITY +  
MAINT +  
DOCUMENTS (0)  
NOTES (0)

BOM Search For BOM1000ABC

Create New Revision

Create

Note: At least one revision must exist (a revision named " " will be auto-created if necessary), and be flagged as 'Current'


Revision	BOM	Labor Plan	Inspection Plan	Current Rev?	Lock/Unlock	Status	Delete
1	Edit BOM	Labor Plan	View (Copy)	Yes	<div>Processing: Unlocked</div> <div>Locked</div> <div>✓ Unlocked</div>	Active	Delete

Information: Revision Deleted

CETEC ERP VERSION 4.040 ON APP2 COPYRIGHT © 2022 CETEC ERP

Apr 22, 2022

35 of 40

 and as **Active**,

CETEC ERP

SALES PARTS PURCHASING WAREHOUSE ACCOUNTING **PRODUCTION** ADMIN

ORDERS ▼ QUALITY ▼ PART REQUEST LIST KITAUDIT ▼ MGMT ▼ TOOLS ▼ SCHEDULING ▼

Revisions For BOM1000ABC

VIEW

EDIT

REVISIONS

BOM DATA +

PRICE/COST +

SALES +

PURCHASING +

ACTIVITY +

QUALITY +

MAINT +

DOCUMENTS (0)

NOTES (0)

BOM Search For BOM1000ABC

Create New Revision

Create

Note: At least one revision must exist (a revision named " " will be auto-created if necessary), and be flagged as 'Current'

Revision	BOM	Labor Plan	Inspection Plan	Current Rev?	Lock/Unlock	Status	Delete
1	<a href="#">Edit BOM</a>	<a href="#">Labor Plan</a>	<a href="#">View (Copy)</a>	Yes ▼	Unlocked ▼ Set To Unlocked	<div>Active ▼</div>	<a href="#">Delete</a>

Active

Runout

Obsolete

Information: Revision Deleted

×

CETEC ERP VERSION 4.040 ON APP2 COPYRIGHT © 2022 CETEC ERP

 Runout,

CETEC ERP

SALES PARTS PURCHASING WAREHOUSE ACCOUNTING PRODUCTION ADMIN

ORDERS ▼ QUALITY ▼ PART REQUEST LIST KITAUDIT ▼ MGMT ▼ TOOLS ▼ SCHEDULING ▼

Revisions For BOM1000ABC

VIEW  
EDIT  
REVISIONS  
BOM DATA +  
PRICE/COST +  
SALES +  
PURCHASING +  
ACTIVITY +  
QUALITY +  
MAINT +  
DOCUMENTS (0)  
NOTES (0)

BOM Search For BOM1000ABC

Create New Revision

Create

Note: At least one revision must exist (a revision named " will be auto-created if necessary), and be flagged as 'Current'

Revision	BOM	Labor Plan	Inspection Plan	Current Rev?	Lock/Unlock	Status	Delete
1	<a href="#">Edit BOM</a>	<a href="#">Labor Plan</a>	<a href="#">View (Copy)</a>	<div>Yes</div>	<div>Unlocked</div> <div>Set To Unlocked</div>	<div>Runout</div> <div>Processing...</div> <div>Active</div> <div><div>✓ Runout</div></div> <div>Obsolete</div>	<a href="#">Delete</a>

Information: Revision Deleted

Help

CETEC ERP VERSION 4.040 ON APP2 COPYRIGHT © 2022 CETEC ERP

 or **Obsolete**.

CETEC ERP

SALES PARTS PURCHASING WAREHOUSE ACCOUNTING **PRODUCTION** ADMIN

ORDERS ▼ QUALITY ▼ PART REQUEST LIST KITAUDIT ▼ MGMT ▼ TOOLS ▼ SCHEDULING ▼

Revisions For BOM1000ABC

VIEW

EDIT

REVISIONS

BOM DATA +

PRICE/COST +

SALES +

PURCHASING +

ACTIVITY +

QUALITY +

MAINT +

DOCUMENTS (0)

NOTES (0)

BOM Search For BOM1000ABC

Create New Revision

Create

Note: At least one revision must exist (a revision named " will be auto-created if necessary), and be flagged as 'Current'

Revision	BOM	Labor Plan	Inspection Plan	Current Rev?	Lock/Unlock	Status	Delete
1	Edit BOM	Labor Plan	View (Copy)	Yes	Unlocked Set To Unlocked	Obsolete Active Punchout <b>✓ Obsolete</b>	Delete

Information: Revision Deleted

CETEC ERP VERSION 4.040 ON APP2 COPYRIGHT © 2022 CETEC ERP



That's it. Now you know how to manually manage BOM revisions in Cetec!

**CETEC ERP**

SALES PARTS PURCHASING WAREHOUSE ACCOUNTING **PRODUCTION** ADMIN

ORDERS ▼ QUALITY ▼ PART REQUEST LIST KITAUDIT ▼ MGMT ▼ TOOLS ▼ SCHEDULING ▼

**Revisions For BOM1000ABC**

VIEW  
EDIT  
REVISIONS  
BOM DATA +  
PRICE/COST +  
SALES +  
PURCHASING +  
ACTIVITY +  
QUALITY +  
MAINT +  
DOCUMENTS (0)  
NOTES (0)

BOM Search For BOM1000ABC

Create New Revision  **Create**

Note: At least one revision must exist (a revision named " " will be auto-created if necessary), and be flagged as 'Current'

Revision	BOM	Labor Plan	Inspection Plan	Current Rev?	Lock/Unlock	Status	Delete
1	<a href="#">Edit BOM</a>	<a href="#">Labor Plan</a>	<a href="#">View (Copy)</a>	Yes ▼	Unlocked <a href="#">Set To Unlocked</a>	▼ Active Updated	<a href="#">Delete</a>

Information: Revision Deleted

Help

CETEC ERP VERSION 4.040 ON APP2 COPYRIGHT © 2022 CETEC ERP



Scan to go to the interactive player